



blacklinesafety

PRODUCT DATASHEETS

Every second counts.

When an incident occurs, the clock starts — and it doesn't stop until help arrives. What happens in between is in your hands, and decisions must be made in real-time. Who's involved, what happened, where is everyone and how are you going to manage the situation?

Blackline's connected safety monitoring technology gives you the chance to control time. Our technologies automatically watch over each employee and call for help, even when they can't. Every alert is reported to monitoring personnel in real-time, arming them with the situational awareness to manage optimized emergency responses.

Our solutions are all about trust and ease of use — connecting your team to real people and ensuring industry-leading monitoring accompanies them, wherever they operate.





G7^c

ALARMS DON'T SAVE PEOPLE. PEOPLE SAVE PEOPLE.

Blackline Safety's G7c uses 3G cellular networks to wirelessly connect your team to real people. Should a gas leak, injury or health event occur, G7c confidently accounts for everyone's wellbeing and whereabouts in real-time.

G7c automatically watches over workers and calls for help, even if they can't. All safety incidents are communicated to live 24/7 monitoring personnel who can mobilize responders to an employee's exact location or trigger an evacuation in real-time. With a two-way speakerphone, monitoring personnel can communicate with the worker directly, providing critical insights of a situation or emergency event.

With a modular design, G7c delivers exclusive customizability. Gas detection is tailored to work environments with a selection of cartridges and sensors — everything is completely configurable. Bump test and calibration data is communicated automatically to Blackline's monitoring portal, Blackline Live, for real-time compliance visibility and reporting. Wireless connectivity ensures that each G7c is remotely configurable, and that firmware updates are automatic.

In Blackline Live, the real-time safety and alert status of every worker in the field is available at a glance. Every alert is automatically communicated to the portal, and managed according to custom documented emergency response protocols. From incident through to resolution, all activities are time-stamped for future reporting, including notes that are used to document the response.

Features



Fall detection



No-motion detection



Messaging



Speaker phone



SOS alert



Check-in



GPS location



Indoor location compatible



Gas alarms

DETAILED SPECIFICATION

Standard G7 safety features

Fall detection and No motion detection: Tri-axis accelerometer, tri-axis gyro, software processing, configurable sensitivity, configurable time window (1-30 mins, or off) for no-motion detection
SOS latch: Pull latch to trigger red alert
Silent SOS: Press and hold latch to trigger red alert
Low-battery: configurable threshold
Worker check-in: Configurable timer (5-180 min, or off), automatic check-in when driving

Additional gas cartridge features

Time-weighted average (TWA)
Short-term exposure limit (STEL)
High gas alert
Low gas alert
Bump test and calibration notification
Bump test and calibration failure alert

Size & Weight

G7 with Standard Cartridge

Size: 64 mm x 124 mm x 27 mm (2.52" x 4.88" x 1.06")
Weight: 162 g (5.7 oz)

G7 with Single-gas Cartridge

Size: 64 mm x 128 mm x 27 mm (2.52" x 5.04" x 1.06")
Weight: 167 g (5.9 oz)

G7 with Quad-gas Cartridge

Size: 66 mm x 150 mm x 27 mm (2.52" x 5.91" x 1.06")
Weight: 192 g (6.8 oz)

Gas Sensor options

H₂S (hydrogen sulphide)
Sensor type: Electrochemical
Range: 0-100 ppm
Resolution: 0.1 ppm

LEL combustible

Sensor type: NDIR and pellistor options
Range: 0-100% LEL
Resolution: 1% LEL

CO (carbon monoxide)

Sensor type: Electrochemical, hydrogen resistant option available
Range: 0-500 ppm
Resolution: 1 ppm

O₂ (oxygen, lead-free)

Sensor type: Long-life pumped electrochemical
Range: 0-25% vol
Resolution: 0.1 %vol

NH₃ (ammonia)

Sensor type: Electrochemical
Range: 0-100 ppm

Resolution: 0.1 ppm
SO₂ (sulphur dioxide)
Sensor type: Electrochemical
Range: 0-100 ppm
Resolution: 0.1 ppm

Cl₂ (chlorine)
Sensor type: Electrochemical
Range: 0-20 ppm
Resolution: 0.1 ppm

COSH (CO + H₂S) — coming soon
Sensor type: Electrochemical
Range: 0-500 CO, 0-100 ppm H₂S
Resolution: 1 ppm CO, 0.1 ppm H₂S

CO₂ (carbon dioxide) — coming soon
Sensor type: NDIR
Range: 0-50,000 ppm
Resolution: 50 ppm

PID (photoionization detector)

Sensor type: PID
Range: 0-6,000 ppm
Resolution: 0.1 ppm at 0 to 100 ppm, 2 ppm at 100 to 6,000 ppm

User interface

168 by 144 pixel graphical, high contrast, liquid crystal display with front lighting, menu system driven by a three-button keypad, power button (on/off), check-in button (check-in/silent SOS), SOS latch (send SOS alert)

User notification

Green SureSafe® light: Blinking (powered), continuous (connected)
Yellow top and front lights: Yellow pending alarm and yellow warning alarm
Red top and front lights: Red alert communicated
Blue LiveResponse™ top and front lights: Confirmation that alert has been acknowledged
Alarm Indicators: Speaker, LEDs and vibration motor
Speaker sound pressure level: ~90 dB @ 10 cm (~90 dB @ 3.94")
Voice calling: Speakerphone and phone modes

G7c wireless radio

Wireless coverage: 100 countries
North America: 2G/3G radio, GSM 850 MHz, PCS 1900 MHz, 3G UMTS bands 2, 5 and 6
International: 2G/3G radio, E-GSM 900 MHz, DSC 1800 MHz, 3G UMTS bands 1 and 8
Antenna: Internal dual-band

Wireless updates

Device configuration changes: Yes,
Device firmware upgrade over-the-air (FOTA): Yes

Location Technology

GPS Radio: 48-channel high sensitivity
Assisted-GPS: Yes
GPS Accuracy: ~5 m (16 ft) Outdoors
Indoor location technology: Blackline Safety location beacons
Location update frequency: G7c 10 sec, G7x 15 min


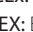
Power & battery

Rechargeable Li-ion battery: 1250 mAh Li-ion
Battery Life: 18 hours continuous operation at 20°C (68°F)
Charge time: 4 hours

Environmental

Storage temperature: -30°C to 75°C (-22°F to 167°F)
Operating temperature: -20°C to 55°C (-4°F to 131°F)
Charging temperature: 0°C to 45°C (32°F to 113°F)
Ingress Protection: IP67

Approvals

SAR, RoHS, CE, RCM
FCC ID: XPY1CGM5NNN | **IC ID:** 8595A-1CGM5NNN
Canada and USA: Class I Division 1 Gr A,B,C,D T4;
Class I Zone 0 AEx ia IIC T4; Ex ia IIC T4 Ga 
IECEx: Ex ia IIC T4 Ga
ATEX: Ex ia IIC T4 Ga  II 1 G

LEL-NDIR: -20°C to 45°C ; CSA C22.2 No.152;
ISA 12.13.01
LEL-Pellistor: Ex ia IIB T4 Ga; Ex ib IIC T4 Gb

Pending Approvals

LEL-Pellistor: Ex ia IIC T4 Ga; CSA C22.2 No. 152;
ISA 12.13.01

Warranty

G7: Two years
Cartridges: Lifetime
G7 complete plan: Three years

Blackline Live web application

Cloud-hosted safety monitoring web application is highly customizable for every customer requirement. Includes live map, employee address book, user roles, alert management, device configurations, alert setups and reporting.

All specifications subject to change without notice. © Copyright 2018 Blackline Safety Corp. All trademarks, product names and logos are the property of their respective owners.



G7^x + G7 BRIDGE

ALARMS DON'T SAVE PEOPLE. PEOPLE SAVE PEOPLE.

Blackline Safety's G7x uses 3G cellular and satellite networks to connect your team to real people — when someone needs a hand, G7x relays the worker's exact position and safety status, from even the most remote locations.

G7x confidently accounts for everyone's wellbeing and whereabouts in real-time to equip live monitoring personnel with valuable insights and calls for help, even when the employee can't. Constant connectivity delivers critical insights and situational awareness for optimized emergency responses.

With a modular design, G7x delivers exclusive customizability. Gas detection is tailored to work environments with a selection of cartridges and sensors — everything is completely configurable. Bump test and calibration data is communicated automatically to Blackline Live, Blackline's safety monitoring portal, for real-time compliance visibility and reporting. Wireless connectivity ensures that updates are automatic.

G7 Bridge The G7x system includes the G7x user-worn device and G7 Bridge portable satellite and cellular base station. Leveraging 3G and Iridium satellite networks, connectivity seamlessly transitions to satellite when cellular becomes unavailable, providing true last-mile monitoring. G7x communicates with G7 Bridge through an industrial-quality 900 MHz radio link from up to 2 km away. G7 Bridge can mass-notify employees of the need to evacuate and connect workers to monitoring personnel via two-way messaging. G7 Bridge is self-powered and portable, allowing you to quickly move it from one vehicle to another. It has your teams' back at all times, no matter their location.

Features



Fall detection



No-motion detection



Messaging



Gas alarms



SOS alert



Check-in



GPS location

Indoor location
compatibleDual mode
communications

Portable

DETAILED SPECIFICATION

G7x

Standard G7 safety alert features

All safety alerts are transmitted immediately to the Blackline Safety Network

Fall detection and No-motion detection: Tri-axis accelerometer, tri-axis gyro, software processing, configurable sensitivity, configurable time window (1-30 mins, or off) for no-motion detection
SOS latch: Pull latch to trigger red alert
Silent SOS: Press and hold latch to trigger red alert
Low-battery: Configurable threshold
Worker check-in: Configurable timer (5–180 min, or off), automatic check-in when driving

Additional Safety Features Available with Gas Cartridges

All gas alerts are transmitted immediately to the Blackline Safety Network

Time-weighted average (TWA)
Short-term exposure limit (STEL)
High gas alert
Low gas alert
Bump test and calibration notification
Bump test and calibration failure alert

Size & Weight

G7 with Standard Cartridge

Size: 64 mm x 124 mm x 27 mm (2.52" x 4.88" x 1.06")

Weight: 162 g (5.7 oz)

G7 with Single-gas Cartridge

Size: 64 mm x 128 mm x 27 mm (2.52" x 5.04" x 1.06")

Weight: 167 g (5.9 oz)

G7 with Quad-gas Cartridge

Size: 66 mm x 150 mm x 27 mm (2.52" x 5.91" x 1.06")

Weight: 192 g (6.8 oz)

Single-gas and Quad-gas Sensor Options

H₂S, LEL, CO/CO-H, O₂, NH₃, SO₂

Coming soon : Cl₂, COSH, CO₂, LEL-Pellistor, PID

User Interface

168 by 144 pixel graphical, high contrast, liquid crystal display with front lighting, menu system driven by a three-button keypad, power button (on/off), check-in button (check-in/silent SOS), SOS latch (send emergency alert)

User Notification

Green SureSafe® light: Blinking (powered), continuous (connected)

Yellow top and front lights: Yellow pending alarm and yellow warning alarm

Red top and front lights: Red alert communicated

Blue LiveResponse™ top and front lights:

Confirmation that alert has been acknowledged

Alarm Indicators: Speaker, LEDs and vibration motor

G7x Wireless Radio

Works with G7 bridge satellite base station

Radio: 902.0–928.0 MHz, 1 Watt

Antenna: Internal

Radio link range: 2 km (1.25 mi) real-world

Location Technology

GPS Radio: 48-channel high sensitivity

Assisted-GPS: Yes

GPS Accuracy: ~5 m (16 ft) Outdoors

Indoor location technology: Blackline Safety location beacons

Location update frequency: 15 min

Power & Battery

Rechargeable Li-ion battery: 1250 mAh Li-ion

Battery Life: 18 hours continuous operation at 20°C (68°F)

Charge time: 4 hours

Environmental

Storage temperature: -30°C to 75°C (-22°F to 167°F)

Operating temperature: -20°C to 55°C (-4°F to 131°F)

Charging temperature: 0°C to 45°C (32°F to 113°F)

Ingress Protection: IP67

Warranty

G7: two years

Cartridges: Lifetime

G7 complete plan: three years

Wireless Updates

Device configuration changes: Yes,

Device firmware upgrade over-the-air (FOTA): Yes

Approvals*

SAR, RoHS, RCM

FCC ID: W77G7X | **IC ID:** 8255A-G7X

Canada and USA: Class I Division 1 Gr A,B,C,D T4;

Class I Zone 0 AEx ia IIC T4; Ex ia IIC T4 Ga 

IECEx: Ex ib IIC T4 Gb

LEL-NDIR: -20°C to 45°C ; CSA C22.2 No.152;

ISA 12.13.01

LEL-Pellistor: Ex ia IIB T4 Ga; Ex ib IIC T4 Gb

Pending Approvals

LEL-Pellistor: Ex ia IIC T4 Ga; CSA C22.2 No. 152;

ISA 12.13.01

All specifications subject to change without notice.

G7 Bridge

Size & Weight

Size: 73 mm x 107 mm x 141 mm (2.87" x 4.21" x 5.55")

Measurements do not include mount

Weight: 540 g (19.04 oz)

Wireless Communication

Radio: UMTS 800/850/900/1900/2100; Quad-band

GSM/GPRS 850, 900, 1800, 1900; Iridium Satellite

(1621 MHz); ISM band radio (915 MHz)

900 MHz Radio: Americas: 902 – 928 MHz Australian/

New Zealand: 916 – 927 MHz, 1 Watt

Antenna: Internal

Power & Battery

Rechargeable Li-ion battery: 6800 mAh capacity

Battery Life: 50 hours @ 20°C (68°F); 44 hours @ -20°C

(-4°F); 14 hours @ -40°C (-40°F); It is recommended

that the hard wire kit is used anytime below -20°C

Charging connector: Micro USB

Environmental

Storage temperature: -30°C to 75°C (-22°F to 167°F)

Operating temperature: -40°C to 55°C (-40°F to 131°F)

Charging temperature: 0°C to 45°C (32°F to 113°F)

Ingress Protection: Designed to meet IP65

Regulatory Compliance

FCC, IC, RCM, RoHS

Contains: FCCID: XPYICGM5NNN, Q639603,

KQNMLINK900, IC: 8595A-ICGM5NNN, 4629A-9603,

2361A-MLINK900

900 MHz Radio Link Range

General use: up to 2 km

© Copyright 2017 Blackline Safety Corp. All trademarks, product names and logos are the property of their respective owners.



G7 DOCK

Connected Gas Calibration and Bump Testing

Blackline Safety's G7 Dock is the simple solution to easily calibrating, bump testing and charging G7 devices. Docks can be used with both G7c and G7x devices, and supports G7 Single-gas and Quad-gas cartridges.

G7 Dock requires no initial setup — all communications and configurations work out of the box. G7 Dock leverages Blackline Live cloud-hosted monitoring portal for configuration and to store test data for compliance tracking and reporting.

With G7 Dock, bump tests and calibrations are straightforward, performed by simply placing G7 into the dock and using the inserted G7 device's LCD screen and menu system. If a G7 device is due for a bump test and/or calibration, it will automatically perform the required test actions when placed into the dock and the lid closed. All test results are communicated in real-time to the user's Blackline Live account after test actions are complete.

Blackline Live makes it easy to manage changes to G7 Dock inlet configurations. Many organizations leverage the convenience of multi-gas mixtures while others employ single-gas cylinders for the improved cost of detector testing and calibration. The default configuration for G7 Dock is a multi-gas mixture, but also supports single-gas setups. Each dock has five ports at the back of the device — four gas inlets and one outlet for exhausting calibration gas. G7 Dock is configurable to manage up to four single-gas cylinders.

Blackline Safety designed G7 Dock to provide economical use of calibration gas, with a low flow rate.

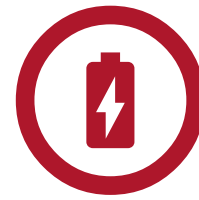
Features



Bump test



Calibrations



Charging



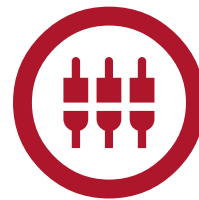
Easy setup



Blackline Live™
web portal



Easy inlet
configuration



Quick-connects



FIVE-WAY G7 DOCK CONFIGURATION For added efficiency, G7 Docks can be setup in multi-dock configurations, accommodating up to five G7 Docks with one gas cylinder. Docks can be mounted on a wall or set up on a table top at any location — docks don't require an ethernet connection, with all information communicated by G7 devices under test. Blackline provides tubing kits for customers looking to implement multi-dock configurations.

DETAILED SPECIFICATION

Size & Weight

Size: 215mm x 100mm x 95mm (8.46", 3.94", 3.74")

Weight: 202g (7.1oz)

Mounting

Wall mounting

Desk mounting

Technical user guide includes mounting template

Gas interface configuration

Four customizable gas inlets, one purge port

Internal pumps

Exhaust diaphragm pumps

Bump test

25-second bump test, less than 10 seconds of gas applied during a bump

Calibration

Four minute calibration, less than two minutes of gas applied during a calibration

Gas Usage

Optimized gas delivery (estimated flow 300ml/min)

Power Supply

Input voltage: 5 VDC @ 1000 mA

Power connector: Micro-USB

120/240 VAC power adaptor and USB cable included

Regulatory Compliance

C-Tick | CAN ICES-3(B)/NMB-3(B) | FCC | CE

Warranty

Two year warranty

Blackline Live Web Application

Cloud-hosted safety monitoring web application is highly customizable for every customer requirement. Includes live map, employee address book, user roles, alert management, device configurations, alert setups and reporting.

HIGHLIGHTS

- Over-the-air configuration updates
- Manage all dock configurations through Blackline Live web portal
- Automatic bump tests
- Automatic calibrations
- Dock usage reports via Blackline Live
- Gas usage reports via Blackline Live
- Doubles as a convenient charging station for G7 devices

AUTHORIZED BLACKLINE SAFETY RESELLER

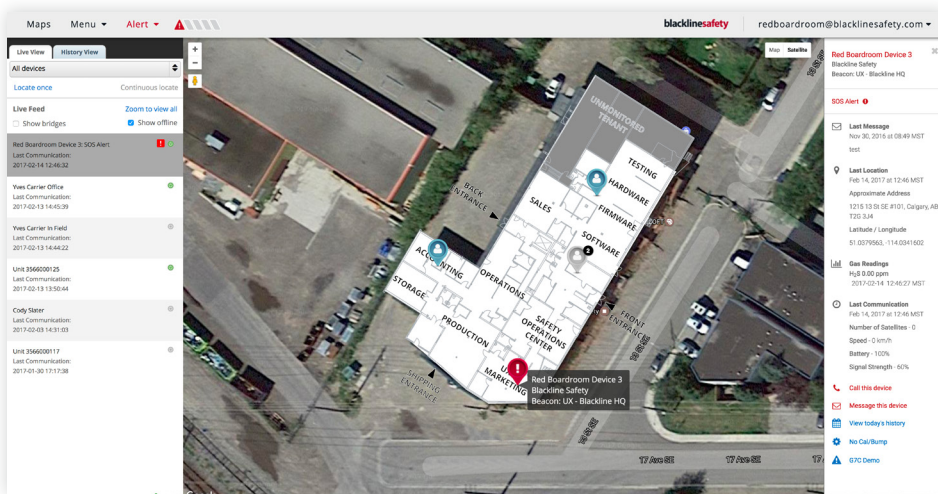
NORTH AMERICA | Toll-free: 1-877-869-7212 | sales@blacklinesafety.com

EUROPE | Phone: +44 1787 222684 | eusales@blacklinesafety.com

INTERNATIONAL | Phone: +1-403-451-0327 | sales@blacklinesafety.com

blacklinesafety

0271/A4/2017-12-13



BLACKLINE LIVE PORTAL

LEADING SAFETY MONITORING TOOLS

The Blackline Live portal is at the core of all Blackline Safety monitoring solutions, equipping businesses with leading alert management tools, dashboard and comprehensive configuration management of fielded devices. Blackline Live can be accessed from anywhere on an internet-connected device.

The safety status of every team member is visible at a glance using Blackline Live's real-time maps, showing the location and alert status of all fielded devices. Custom floor and site plans work together with Location Beacons, delivering more comprehensive situational awareness where GPS may be unavailable or in and around complex facilities.

Employee-worn monitoring devices are easily configured for specific work environments. Each device is managed in Blackline Live using configuration profiles that make it easy to tailor device functionality to accommodate any need. Devices are configured wirelessly, over-the-air, ensuring they are always up-to-date and working as they should. Alert profiles are also configured through Blackline Live, with documented custom emergency protocols tailored to the device that instruct monitoring personnel how to manage optimized emergency responses. Using address book contacts stored in Blackline Live, personnel know who to call and how to escalate responses, up to and including EMS, fire or police.

Whether you decide to monitor in-house or take advantage of Blackline's 24/7 Safety Operations Center, monitoring personnel use Blackline Live to provide them with critical insights and workflows to manage emergency alerts in real-time. As a cloud-hosted web portal, Blackline Live doesn't require IT approved downloads or costly installation — accessing your account is as simple as logging in. Delivering situational awareness communicated from employee-worn devices in the field, Blackline Live provides all the tools necessary for monitoring personnel to manage a world-class emergency response.

Supporting gas detection programs, G7 devices equipped with gas sensors wirelessly communicate compliance and usage data to Blackline Live for automatic reporting, alleviating the need for manual data collection. From incident through to resolution all activities are time-stamped for future reporting, including notes that are used to document the response.

FEATURES



Alert management tools



Custom maps & floor plans



Custom alert profiles



Wireless device configuration



Evacuation management



Employee address book



Compliance dashboard



Reporting



DETAILED SPECIFICATION

Alert Management

Visual and audible indication of every alert
Location and identity of the employee plus nearby co-workers (map)
Document alert activities with notes
Resolve alerts as a system test, false alert or incident (with or without dispatch)

Real-time Location Map

Real-time safety status of every team member visible on the map page

Device Configuration Profiles

Devices configured wirelessly, over-the-air
Adjust alert functions and sensitivities from any internet connected device

Alert Profiles

Documented emergency response protocols easily customized for different environments or operating needs
Identify how monitoring personnel will escalate responses during an emergency
Notify supervisors by text and email when an alert occurs

Evacuation Management

Notify and direct a single worker or whole teams to designated muster points
Trigger a large scale evacuation using mass-notifications
Monitor the progress of evacuations on a map in real-time from start to finish

Reporting

Every event is time-stamped and recorded for reporting
Transparent emergency response-time reporting ensures superior performance standards

Employee Address Book

Store employee contact information for escalation

Employees are associated with devices and as notified contacts or emergency contacts within alert profiles

Alert History

View documented history of every alert
Review notes, messages to employees and voice recordings of calls to users

Requirements

Internet connection
Web browser: Safari, Chrome, Firefox, Internet Explorer, Blackberry Wi-Fi browser

Dashboard

View real-time equipment utilization
Address gas detection compliance gaps proactively

Gas Detection Compliance

Monitor fleet health, see which devices are healthy, have service pending or required
Schedule and monitor calibration and bump tests
Map gas events to identify potential hazards



SAFETY OPERATIONS CENTER

24/7 WORRY-FREE SAFETY MONITORING SERVICE

Blackline's safety monitoring and gas detection solutions deliver complete customization and 24/7 real-time safety monitoring for any application. Our Safety Operations Center provides organizations with expert safety monitoring and support, ensuring superior employee safety monitoring without sacrificing business productivity.

While some businesses are capable of self-monitoring, with designated control rooms or highly available supervisors, many are better supported by our in-house monitoring team. Blackline's Safety Operations Center (SOC) focuses exclusively on monitoring the well-being of employees' safety. Unlike traditional call centers that often split focus between telemarketing and IT support, our SOC is staffed with professionally-trained monitoring agents 365 days a year.

Our SOC utilizes the Blackline Live web portal, providing them with critical insights into emergency alerts in real-time. Delivering situational awareness communicated from employee-worn devices in the field, Blackline Live provides all the tools necessary for the SOC to manage a world-class emergency response.

Located at our headquarters in Calgary, Canada, the Safety Operations Center incorporates state-of-the-art infrastructure, including redundancy of power supply, communications and computing. We monitor over 7,500 devices world-wide, around-the-clock.

Monitoring personnel manage safety and gas detection alerts in real-time from receipt through to resolution by following the customer's tailored and documented emergency response protocol. Should an emergency take place, our Safety Operations Center is empowered to dispatch local emergency services across North America. Emergency responders are directed to the precise location of the employee in distress.

With 99.5% of alerts responded to in under a minute, Blackline's Safety Monitoring Center facilitates worry-free monitoring services and support, so employees can take comfort knowing their safety is always covered.

Overview

- Turn-key, around-the-clock emergency response management service
- Ideal for businesses without a control room or supervisors that are always available
- Supports all Blackline Safety monitoring device types
- Every alert managed according to your custom, documented response protocol
- Eases the burden on your team
- Our agents are always available and highly trained
- 99.5% of alerts responded to in less than a minute
- Ideal for both lone working and gas detection applications
- Agents can provide on-the-spot training for your employees
- Direct 9-1-1 call escalation to police and EMS in Canada and the United States



EMERGENCY RESPONSE MANAGEMENT

- Response management for injuries, health events, security breaches, gas leaks and evacuations
- Alerts efficiently managed from receipt through to resolution
- Monitoring over 7,500 client devices

CUSTOM EMERGENCY RESPONSE PROTOCOL

- Emergency responses are managed based on custom emergency response protocols
- Supervisors are notified by text and email while SOC manages the alert
- Alert escalation path to supervisors or local emergency services is clearly defined and managed
- Mapping of employee locations using GPS or Location Beacons ensures an efficient response

ALERT LIFE-CYCLE MANAGEMENT

- Transparent response-time reporting ensures superior performance standards
- Every event is time-stamped and recorded for reporting
- Highly qualified monitoring agents handle every alert

BLACKLINE LIVE WEB MONITORING PORTAL

- Provides personnel with leading safety monitoring tools
- Real-time safety status of every team member is visible on the map page
- Simple configuration of emergency protocols
- Type of alert is clearly displayed on a map with details like gas type and concentration

COMMUNICATING WITH EMPLOYEES

- Blackline Live address book provides employee contact information for escalation
- Agents can speak with the employee via optional two-way voice communication (Loner M6 and G7c monitoring devices)
- Monitoring team communicates with employees via messaging (G7c and G7x)
- Real-time translation of over 200 languages

EVACUATION MANAGEMENT

- Can notify and direct a single worker or whole teams to designated muster points
- Trigger a large scale evacuation using mass-notifications

- Monitor the progress of evacuations in real-time from start to finish

ENVIRONMENTAL GAS MONITORING

- The type and concentration of a gas exposure is relayed in real-time
- Empowered with situational awareness of an event, personnel can manage optimized emergency responses
- All gas readings are stored in Blackline Live
- High gas, TWA and STEL events trigger real-time alert management

HIGHLY-QUALIFIED MONITORING AGENTS

- Specialize in Blackline Safety employee-worn monitoring devices
- Can provide on-the-spot training to support your employees
- Agent training includes:
 - WHMIS
 - Standard first aid with CPR-C and AED
 - H2S Alive

INTRINSICALLY SAFE

LOCATION BEACON



RESPOND TO INDOOR INCIDENTS WITH PRECISION

Precise positioning empowers emergency response

In certain facilities, GPS signals alone may not provide sufficient positioning precision to locate employees during an emergency response. In such circumstances, every second counts and time wasted searching for someone could mean the difference between rescue and recovery.

Blackline Safety addresses this challenge with Location Beacons — compact wireless positioning transmitters. Beacons are installed where employees operate, from one per floor to one per room depending on facility size and operations. Beacon locations are then recorded on custom floor or site plans on a live map in Blackline Live, Blackline's safety monitoring software, so you always know exactly where your people are in context of their surroundings. Beacons are self-powered and affordable, taking only minutes to install without any calibration or triangulation.

Each beacon broadcasts a unique identity number that is received by Blackline Safety's monitoring devices, including G7c and G7x. When personnel are within proximity of beacons, monitoring devices store the nearby beacon identities and reports their location to Blackline Live.

Protect the safety of your workforce with Loner Beacon indoor location technology.

Features



Intrinsically safe



Precise location technology



Floor plans and location names



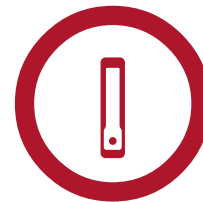
Long battery life



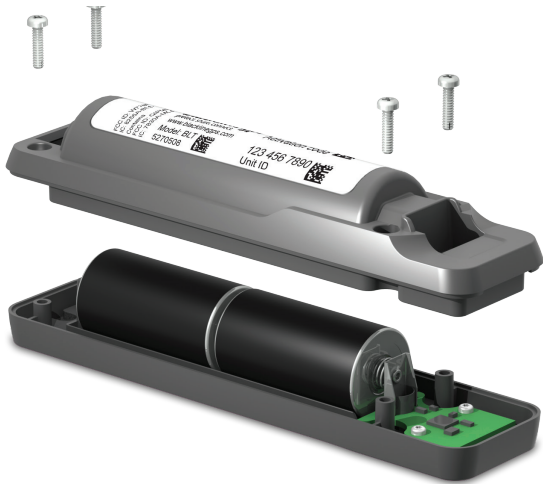
IP65 sealed



Easy setup



Compact design



Easy Location Beacon Battery Replacement

Alert Management

Victoria Souter

Company: Blackline
Device ID: 2564001125
Mobile: 403-555-1234
Work: N/A
Home: N/A

Emergency Alert
2015-05-07 15:43:15 MDT

Choose a reason for resolving

Resolve Alert

Notes

Add a note...

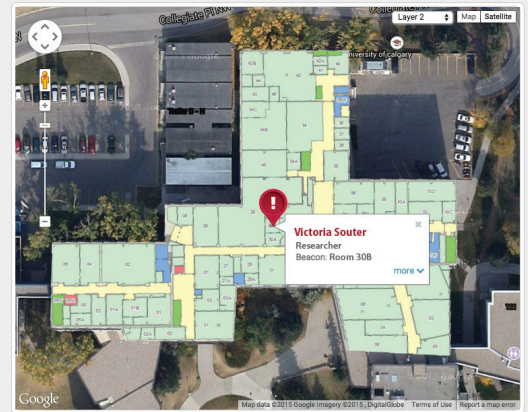
Post

Brendon Cook
2015-05-07 15:43:29 MDT

Cannot reach the employee, escalating to the supervisor.

Brendon Cook
2015-05-07 15:44:32 MDT

Calling out to the employee



Response Protocol

Responders

Info

Fall Detection, No-motion Detection, and Missed Check-in Alert
1a. Call emergency services (9-1-1 where possible)
1b. A second agent is to call the worker to verify potential incident
2. Escalate to supervisor if employee is unreachable
3. Escalate to emergency services if the supervisor is not available.

Custom floor and site plans are overlaid on top of the interactive Google map

DETAILED SPECIFICATION

Size & Weight

Size: 161 mm H x 40 mm W x 32 mm D (6.4" x 1.6" x 1.3")

Weight: 210 g (7.4 oz)

Mounting

Mounting bracket included

Mounting methods: screws, tie straps, adhesive

Mounting options: walls, wall corners, poles, etc.

Buttons & Indicator Lights

Single button for powering on/off plus configuration

Green LED for power indication and configuration

Red LED for low battery indication

Wireless Communication

Indoor positioning radio: 2.4 GHz to supported Loner safety monitoring devices

Location Technology

Low-power continuous beacon signal enables

Loner safety monitoring device proximity

detection

Beacon Signal Range

Four configurable signal range levels between 4.5 m and 36 m (15 ft and 120 ft) line of sight (less range when obstructed)

Notification Messages

Low Battery communicated by Loner or G7 devices

Power & Battery

Batteries: two C-cell alkaline (included)

Battery life: 5 years continuous operation at highest power setting, no wiring required

Environmental

Storage temperature: -40 to 65° C (-40 to 149° F)

Operating temperature: -20 to 55° C (-4 to 131° F)

Ingress Protection: IP65

Regulatory Compliance

Class I, Div 1, Groups A-D, T4

ATEX: CE II 1G, Ex ia IIC T4 Ga

IECEx: Ex ia IIC T4 Ga

RoHS

FCC ID: W77BCN

IC: 8255A-BCN

Device Requirements

Blackline Live Portal user account with activated, compatible Loner or G7 devices

Warranty

One year limited factory warranty

Wireless Coverage and Activated Service Plans

2.4 GHz operation regions: global

Service plan options: no service plan required

Blackline Live Web Application

Features Include: Beacon map editor, alarm banner, event history, device location mapping, device management, alert & notification settings and more
Comprehensive safety alert life cycle management: includes alert configuration profiles, safety protocol, and emergency contacts

All specifications subject to change without notice.

© Copyright 2016 Blackline Safety Corp. All trademarks, product names and logos are the property of their respective owners.

NORTH AMERICA | Toll-free: 1-877-869-7212 | sales@blacklinesafety.com

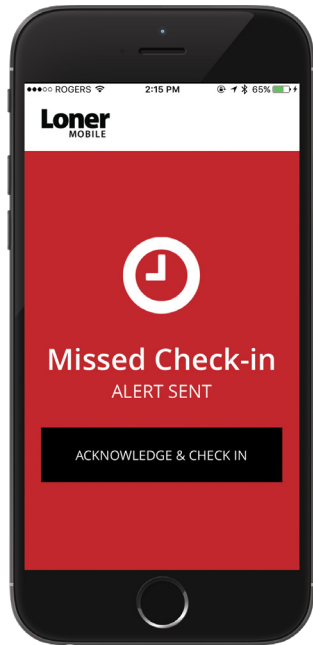
EUROPE | Phone: +44 1787 222684 | eusales@blacklinesafety.com

INTERNATIONAL | Phone: +1-403-451-0327 | sales@blacklinesafety.com

blacklinesafety

www.BlacklineSafety.com

0205/R2/2016-12-05



Loner
MOBILE

TURN A SMARTPHONE INTO A SAFETY MONITORING PLATFORM

Employees often work alone or interact with members of the public and require a simple, non-intrusive solution to monitor their safety. Blackline's Loner® Mobile smartphone app was designed specifically to meet these needs. It fits into an employee's routine, easily replacing productivity-draining check-in and journey management procedures.

More than just an app — unlike some competitor apps that call a buddy list, Loner Mobile directly alerts monitoring personnel via the Blackline Safety Network to make a difference with an empowered emergency response to the employee's exact location. A configurable check-in timer confirms the employee's ongoing well-being — if the user fails to check-in, Loner Mobile alerts monitoring personnel armed to respond with your tailored emergency response protocol.

Prior to entering a site, building or client's home, users can send location-based notes to Blackline's monitoring infrastructure, providing valuable context regarding their location, activities and associated risk level.

Loner Mobile works with the Blackline Live web portal, for remote management of all of Blackline's safety solutions. Blackline Live makes it easy to manage numerous teams with customized device profiles, over-the-air configurations and updates, and a comprehensive safety alert management tool-set. Alerts can be configured for automatic two-way voice calling to dedicated monitoring personnel.

Wearable enhancements — optional Loner Duo and SOS Button accessories are wearable technologies that provide a critical physical interface for Loner Mobile. Featuring Bluetooth® wireless communications, Loner Duo and SOS Button maintain a communication link with Loner Mobile, automating the process of monitoring employee safety. They provide a physical link to monitoring personnel, enabling the employee to instantly request help with the pull of an emergency SOS latch or push of an SOS button, even if the smartphone is not within arm's reach.

Features



Two-way voice



24/7 live monitoring



Automated check-ins



Custom notes



Emergency alerting



Location technologies



Blackline Live portal



Wearable accessories

Specifications

Loner Mobile App

Smartphone Compatibility

iPhone: iOS 8.0.1+
Android: 4+
BlackBerry: OS 10+

Safety Monitoring Features

Emergency alert: slider control within application
Worker check-in: configurable check-in period (1 – 180 min)
Automatic check-in on GPS speed (configurable above 20 km/h)

Additional Features via Optional Loner Duo Accessory

SOS Latch: open latch to trigger alert | **Silent SOS:** press & hold acknowledge button to trigger alert |
No-motion detection using internal accelerometer

Additional Features via Optional SOS Button

SOS Alert: easily trigger an alert by pushing the button
Connection status: red and green lights clearly indicate connection status
Can be worn as a pendant, like a wrist watch or with a clothing clip (pants pocket, belt, shirt placket or pocket)

Two-way Voice Calling

Upon triggering of an SOS Alert, Loner Mobile automatically phones a specified number

Employee check-ins

Check in upon Loner Mobile request or early with a press of a button (Loner Duo or SOS Button). Early check-ins with Loner Duo and SOS button do not require unlocking the smartphone.

Notes

Optional check-in note: pre-defined or custom note, includes employee location

User Notification

Indicators: alarm, sound and vibration notifications

Location Technology

GPS accuracy: ~5 m (16 ft) outdoors
Wi-Fi accuracy: ~25 m (82 ft)
Mobile network accuracy: ~1500 m (4900 ft)

Mobile Messaging Methods

Email, text message (SMS)

Alert Messages

SOS Alert, Missed Check-in, Low Battery, Power Off

Location Publishing

Periodic automatic location reporting: 1 – 60 minutes
Hybrid of: GPS, Wi-Fi and mobile network tower ID

Compliance

BS 8484 compliant

Device Requirements

Installation on compatible smartphone, activation within Blackline Live, service plan, GPS or Wi-Fi coverage for locating, cellular communications

Wireless Coverage and Activated Service Plans

Wireless coverage: Depends on wireless carrier

Blackline Live Web Application

Features Include: Alarm banner, event history, device location mapping, device management, alert & notification settings and more
Comprehensive safety alert lifecycle management: includes alert configuration profiles, safety protocol, and emergency contacts

Loner Duo

Size and Weight

Size: 51 mm x 32 mm x 62 mm (2.01" x 1.26" x 2.44")
Weight: 75 g (2.65 oz)

Safety Features

Emergency latch: Release latch to trigger emergency alert
No-motion: Configurable time windows (1-10 minutes)
Check-in timer: Configurable intervals (5-180 minutes)

Buttons and Indicator lights

Power button: Power on/off
Acknowledge button: Check-in
Emergency latch: Send emergency alert
Red indicator light array, vibration and buzzer: Safety alert triggered
Green indicator light: Blinking (powered), solid (connected)

Power and Battery

Rechargeable Li-ion battery: 350 mAh capacity
Battery life: 12 hours continuous operation
Charging connector: 4-pin sealed connection

Environmental

Storage temperature: -30° C to 75° C (-22° F to 167° F)
Operating temperature: -20° C to 55° C (-4° F to 131° F)
Ingress protection: IP65

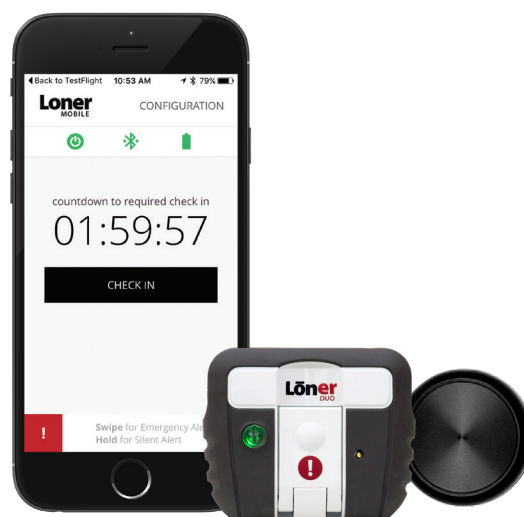
Warranty

One year limited factory warranty

SOS Button

Specifications

Range: 2 meters
Weather usability: Waterproof
Battery life: One month
Lights and sound: Sound and visual alarm
Automatic alerts: Automatic fall detection



Loner Mobile and optional Loner Duo and SOS Button Bluetooth accessories

Loner

M6



MONITOR LONE WORKERS, EVACUATE SITES & FACILITIES

Global safety monitoring solution with 3G wireless

The Blackline Safety Loner® M6 device wirelessly monitors the safety of employees, including lone workers, and alerts monitoring personnel in real-time if the unexpected occurs. Responding to your employee's exact location is fast and confident with a live-map and two-way voice calling. The device empowers your team to evacuate sites and facilities with mass notifications, accounting for the location of each worker during the process on the Blackline Live monitoring portal. Employees receive a visual, audible and vibration-based alarm on their device plus voice-message evacuation instructions.

Designed for industrial applications, Loner M6 incorporates cellular communications, an industrial-grade speakerphone, a blue LiveResponse™ light that confirms that help is on the way, assisted-GPS, automatic incident detection and manually-triggered safety features. Loner M6 features durable hardware to ensure your workers are safe in all environments. It is also compatible with Blackline's location beacon positioning technology to map an employee's location inside facilities where GPS signals are imprecise or unavailable.

All of Blackline's solutions are wireless, software and infrastructure-free for easy implementation and a seamless user experience.

24/7 live monitoring for highest responsiveness

Our Blackline Complete service plan delivers around-the-clock live safety monitoring, leveraging Blackline's in-house Safety Operations Center or one of our Alarm Receiving Center partners. Businesses can also choose to self-monitor their lone workers using our cloud-hosted Blackline Live portal. All features on the device are configurable on the portal to best fit your specific work environment needs. Blackline Safety is British Standard 8484: 2011 accredited.

Features



Fall detection



Two-way voice calling



No-motion detection



Check-in



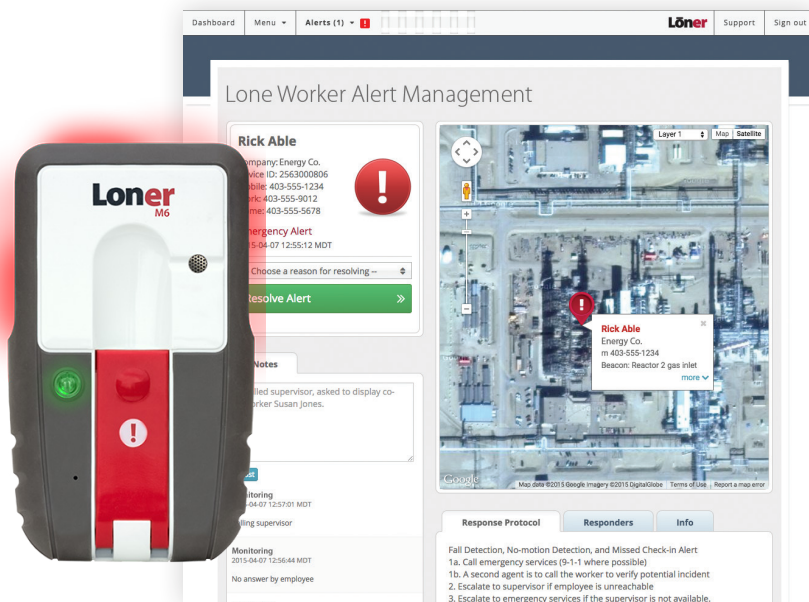
SOS Alert



Indoor location compatible



GPS location



Blackline Live safety monitoring account – alert management page

DETAILED SPECIFICATION

Size & Weight

Size: 63 mm x 107 mm x 22 mm (2.48" x 4.213" x 0.87")

Weight: 137 g (4.8 oz)

Safety Monitoring Features

Fall detection technology: Tri-axis accelerometer, tri-axis gyro, software processing

Emergency latch: Pull latch to trigger alert

Silent emergency: Press & hold check-in button to trigger alert

Worker motion monitoring: Configurable time window (1–30 min, or off)

Worker check-in: Required check-in period (5–180 min, or off)

Voice calling: Two-way and one-way (listen-only) phone calling (requires a voice-enabled service plan)

Buttons & Indicator Lights

Power button: Power on/off

Check-in button: Check-in/silent emergency

Emergency latch: Send emergency alert

Red indicator light array plus vibration and beeper: Safety alert triggered

Blue indicator light array plus vibration and beeper: Incoming voice call

Blue indicator light: Alert has been acknowledged in the portal

Green SureSafe light: Blinking (powered), continuous (connected)

User Notification

Indicators: Speaker, LEDs, and vibration motor

Speaker sound pressure level: ~90 dB @ 10 cm (~90 dB @ 3.94")

Voice calling: Speakerphone and phone modes

Wireless Communication

Radio: Dual-band 3G (900, 1800 MHz)

Antenna: Internal dual-band

Bidirectional data communication: Yes

Firmware upgrade over-the-air (FOTA): Yes

Location Technology

GPS Radio: 48-channel high sensitivity, mobile assisted

Assisted GPS: Yes

GPS Accuracy: ~5 m (16 ft) Outdoors

GPS Real-time location turnaround time: ~20 seconds

Loner Beacon compatible: Yes

Alert Messages

Fall detected, emergency latch, silent emergency no-motion, missed check-in, low battery, log-on, power off

Power & Battery

Rechargeable Li-ion battery: 1250 mAh Li-ion

Battery Life: 20 hours continuous operation at 20° C (68° F)

Charging connector: 4-pin sealed connection

Environmental

Storage temperature: -30°C to 75°C (-22°F to 167°F)

Operating temperature: -20°C to 55°C (-4°F to 131°F)

Charging temperature: 0°C to 45°C (32°F to 113°F)

Ingress Protection: Designed to meet IP65

Approvals

FCC Part 15 Subpart B, FCC ID: XPYSAU260,

Industry Canada 8595A-SARAU260

BS 8484: 2011 accredited

Device Requirements

Blackline Safety service plan, 3G wireless communication coverage, GPS signal coverage required for GPS locating, Loner Beacon signals for precise indoor positioning

Environmental

Storage temperature: -30°C to 75°C (-22°F to 167°F)

Warranty

One-year limited factory warranty

Wireless coverage and service plans

Wireless coverage: ~200 countries

Service plan options: Silver (for self-monitoring) and Gold (24/7/365 live monitoring included), with and without voice calling, contact Blackline for further details

Blackline Live Web Application

Features include: Alarm banner, initiate voice call, event history, device location mapping, device management, alert & notification settings, and more.

All specifications subject to change without notice.

© Copyright 2016 Blackline Safety Corp. All trademarks, product names and logos are the property of their respective owners.



Contact us.

We've got your back. Discover how Blackline's solutions can make a difference in your safety program.

North America | Toll-free: 1-877-869-7212 | sales@blacklinesafety.com

Europe | Phone: +44 1787 222684 | eusales@blacklinesafety.com

International | Phone: +1-403-451-0327 | sales@blacklinesafety.com

